



LIVERMORES
THE ESTATE AGENTS

4 Bedrooms

House - Townhouse

Located in Tunbridge
Wells

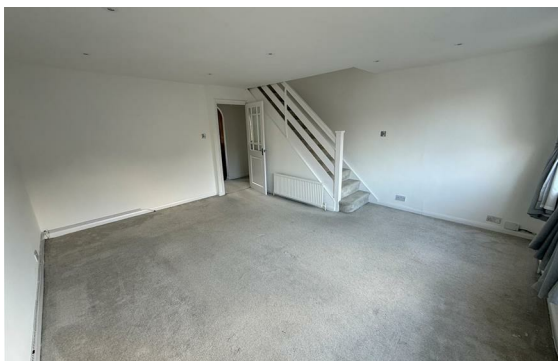
£1,900 Per Calendar
Month



lettings@livermores.co.uk

www.livermores.co.uk

01322 311427



Nestled in the desirable area of Green Way, Tunbridge Wells, this charming townhouse offers a perfect blend of comfort and convenience. With a generous living space of 1205 square feet, this property boasts four well-proportioned bedrooms, making it an ideal home for families or professionals seeking extra room.

The townhouse features a welcoming reception room that provides a warm and inviting atmosphere, perfect for relaxation or entertaining guests. The spacious accommodation allows for flexible living arrangements, with the potential to utilise one of the bedrooms as a study or guest room, catering to your individual needs.

Situated in a sought-after location, this property is just a stone's throw away from the vibrant town centre, where you can enjoy a variety of shops, cafes, and local amenities. The proximity to the town centre ensures that you are never far from the action, while still enjoying the tranquillity of a residential area.

This delightful townhouse is available for immediate occupancy, making it an excellent opportunity for those looking to move quickly. With its appealing features and prime location, this property is sure to attract interest. Do not miss the chance to make this lovely townhouse your new home in Tunbridge Wells.

Energy Efficiency Rating: D

Agents Note: Whilst every care has been taken to prepare these particulars, they are for guidance purposes only. All measurements are approximate and are for general guidance purposes only and whilst every care has been taken to ensure their accuracy, they should not be relied upon and potential buyers/tenants are advised to recheck the measurements.

LIVERMORES
THE ESTATE AGENTS

1 Hythe Street

Dartford

Kent

DA1 1BE

01322 311427

lettings@livermores.co.uk

www.livermores.co.uk